

## Division Meeting Schedule

July 2008 - No Meeting

August 17, 2008 - Annual Covered Dish Picnic, Homewood Junction Village Center Park. Gathering begins at 12:30; meal at 1:00; Meeting to follow.

September 21, 2008 - Woodlands Foundation, 134 Shenot Rd, Wexford, PA  
Neal Schorr's Layout open 12:30 - 1:30  
Meeting: 2:30 PM  
Program: "Line Poles & Pole Lines", by Neal Schorr

## Bring'n'Brag Categories for 2008

Jan	Anything Goes
Feb	Switchers
Mar	Open Hopper Bottom Cars
Apr	Meat Packing Industry
May	No Contest
Jun	Built Laser Kit
Aug	On-Line Structures
Sep	Diesel Power
Oct	MOW Equipment
Nov	Industrial Structures



Fallen Flags of the Keystone Division

August 2008

Vol. 50, Issue 7



## From the Super's Desk

The next time anyone asks you what the NMRA does for you, you can refer to the article that is printed later in this issue regarding a patent infringement suit. It may seem trivial to those who did not know about the issue from the start. In a nutshell, the story goes something like this. A number of manufacturers were happily making sound decoders and model railroaders were enjoying the sounds of steam and diesel engines. A company named Real Rail Effects announced to the U.S. Patent Office that it had invented the first sound decoder and should be granted an exclusive patent. The U.S. Patent Office, knowing no better, granted the patent to RRE. The plan was to limit the manufacture of sound decoders to RRE exclusively or force the other manufacturers to pay royalties to RRE. Either would have cost model railroaders much more money than they were already paying. The NMRA and the current manufacturers got together to fight RRE. They were able to prove that RRE was not the first to invent the sound decoder. The U.S. Patent Office asked RRE what they had to say, and for all the sound in their decoders, they said nothing. The exclusive patent on sound decoders was revoked. Model railroaders have much reason to rejoice, for sound will remain relatively affordable. The efforts of the NMRA have won a crucial battle for its members. It is behind the scenes efforts like these that are the real benefit of membership. Next time you talk with an independent model railroader, bring up this story. (SEE "Why Join The NMRA?" on p. 6. vck.)

Be sure to plan to come to the annual picnic. Let Mike Hohn know how many people will be coming with you and what covered dish you will bring. It would also be a good idea to bring extra chairs. If anyone is willing to help with the cooking, let Mike know. I look forward to seeing you all there.

... Susan Werner

Ed. Note: Since submitting her column, Susan reported the unsuccessful result of our bid to host the 2013 National Convention. I quote from her email message, "we lost the bid because of union labor issues and the parking problems and prices in Pittsburgh. There were many comments that the presentation was good and more than a few BOD members really wanted to come to Pittsburgh, but we were sunk by problems over which we have no control."





Visit us on the World Wide Web at  
<http://www.keystonedivision.org>



## Minutes From Last Meeting

## JERRY KYSLINGER

Steve Ross was unable to make the meeting so I volunteered to take the meeting minutes.

The June 8<sup>th</sup> meeting of Division 2 was called to order at 2:10 PM by our new Superintendent, Susan Werner. The meeting was held at the offices of Scenic Express in Delmont. Our host was Jim Elster, the owner. The first order of business was a presentation by Jim on new products. He demonstrated various products to create ground cover including the Silflor landscape products and techniques on how to apply the product. Silflor has developed a rayon product that is applied via a static discharge dispenser. The Silflor products are also available as mats. Samples were passed around during the presentation and many modelers tried their hand at creating various textures after the meeting. Before and after the meeting, the 60 plus members in attendance wandered through the warehouse and made purchases. There was a line at both registers when I left about 30 minutes after the meeting ended.

The minutes of the previous meeting were accepted as presented in the June 2008 edition of *The Keystone Flyer*. The motion to accept the minutes was made by Bob Meier and seconded by Jim Dodds.

Carl gave the Treasurer's report. Income for the month was \$7,179.66 and expenses were \$5,095.65 for net of \$2,084.01. The higher than normal amounts are due to the April Jamboree. Income from the Jamboree was \$5,606.00 which includes pre-registrations of \$3,359.00 and walk-ins of \$615.00; \$952.00 from the raffle; \$652.00 from the Company Store; and, \$28.00 miscellaneous income. Total expenses were \$4,709.39. The net income was \$896.61. There may be other expenses outstanding, so this is not the final report. Pass the hat brought in \$50.

Dick Flock reported that he will reorder the Sylvan trucks. Send Dick an email to order. There are two '60s era Seaboard box cars for sale in the Company Store.

Tom Gaus reported that our current membership is 253. The Division 2 webpage was updated with the new MCR officers and other division changes that were report at the Spring MCR Board of Director meeting.

Bob Meier reiterated the status of the FreeMo Group and the July Greenberg Show that appeared in the June *Flyer*.

The \$5 certificates were given to Hans Werner, Andy Blenko, Dill DeFoe, Mike Hohn and John Weinhold. The \$15 certificate was awarded to Dick Flock.

There was no report for the video library.

The MCR 2010 Convention will be in Charleston, WV. The Embassy Hotel will have suites available for \$139. That price includes a free breakfast cooked to order. Awards from the recent MCR Convention were presented to Keith DeVault, Steve Ross and Dick Flock.

Mike Hohn reported on upcoming programs. The annual Division 2 picnic will be held on August 17<sup>th</sup> at Homewood Junction Village Center Park off Exit 13 of the PA Turnpike at PA Route 18. Tell Mike what you will be bringing and please bring as much as you and your family/guests will eat. Only on-street parking is available. Neal Schorr will host the September meeting. The site for the October and November meetings had not been determined at the time of this meeting.

Dennis Vaccaro did not have any Achievement Program awards to hand out. However, he expressed the desire for Division 2 to have several new MMRs for the 2013 National Convention.

In other business, it was mentioned that a new book on the G. C. Murphy Company is forthcoming. Go to [www.murphymemories.com](http://www.murphymemories.com) for additional information. The interiors of the former Bellevue and Elwood City stores are almost unchanged. The former Ellwood City store is now a comic book archive store. The cast metal vents in the display windows have the Murphy Company emblem as the webbing. The Conrail Historical Society will hold the Altoona Juniata Shops Show on October 24<sup>th</sup> through 26<sup>th</sup>. Prices are \$125 for members and \$160 for nonmembers. Tours are included in the price. The Hotel rate is about \$100/night. Caboose rides will be held on August 10<sup>th</sup> on the New Castle Industrial Railroad; see [www.beavervalleyjunction.org](http://www.beavervalleyjunction.org) for additional information.

See *Minutes*, Page 3...

The Keystone Flyer is published ten times a year by Division Two of the National Model Railroad Association, Mid-Central Region.

Subscription to the Flyer is included with your NMRA membership if you reside within the geographical boundaries of Division Two. Ad-

Paul Gallick reported that 7 Bring 'n Brag entries were received. This month's category is "Built Laser Kits". Paul distributed gift certificates to Bring 'n Brag entrants based on the standings through November 2007. The \$2 gift certificates went to Andy Lorince, Alden McBee, Mel Dithrich, Bob Hickman, Larry Kline and Susan Werner.

ditional, or non-member, yearly subscriptions are available for \$5.00. Make checks payable to: Division Two, NMRA-MCR and send with name, address, and phone number to Vagel Keller, Editor, P. O. Box 5130, Pittsburgh, PA 15206.

Pike ads are available to publicize your home or club model rail empires for a \$15.00 yearly fee. You may supply artwork or have it produced by the editor for a nominal fee. Pike ads are also posted on the Division's website: <http://www.keystonedivision.org>

Keystone Flyer

August 2008, Volume 50, Issue 7

Page 2

## PUBLIC TIMETABLE

Sunday, August 10, 2008 - 11:00am to 4:00pm  
**Beaver-Lawrence Railway Historical Society  
 Caboose Rides 2008**

Enjoy a fun day riding vintage cabooses on the Newcastle Industrial Railroad in conjunction with the annual Mahoningtown Festival

Location: 102 East Cherry Street, Newcastle (Mahoningtown) PA, follow Rt. 18 north from PA Turnpike

Trains depart from UN Tower, round trip is about 20 minutes, free parking, food, beverages, vendors and other attractions

Donations: \$6.00 Adults, \$3.00 children under 12, children 3 & younger free.

For more information call Dan Devic at 412-377-2808

October 11 - 12, 2008: 9:00 - 4:00 Sat & 10:00 - 4:00 Sun  
**Great Scale Train Show & Railroad Marketplace**

Location: Maryland State Fair Grounds, Timonium, MD  
 Admission: \$7.00 Adults, \$14.00 Families, Children 12 and under Free

<http://www.gsmts.com>

### Keystone Division Officials

#### Superintendent

Susan Werner  
 (724) 379-8584  
[swerner48@yahoo.com](mailto:swerner48@yahoo.com)

#### Clerk

Steve Ross  
 (724) 527-7727  
[SRossDNH@aol.com](mailto:SRossDNH@aol.com)

#### Asst. Superintendent, Meetings & Programs

Michael Hohn  
 (304) 296-6303  
[m.e.hohn@att.net](mailto:m.e.hohn@att.net)

#### Treasurer

Carl Volkwein  
 (724) 941-6954

#### Company Store

Dick Flock  
 (724) 850-8882  
[jlerr337@verizon.net](mailto:jlerr337@verizon.net)

#### Achievement Program

Dennis Vaccaro

## Events of Interest

October 11 - 12, 2008 - **East Broad Top RR Fall Spectacular**, Rockhill/Orbisonia, PA

Steam and diesel-powered excursions, plus the gas-electric M1. Guided tours of the shops and roundhouse.

Special fares apply.

Contact: (814) 447-3256, email: [office@ebtr.com](mailto:office@ebtr.com)

October 24-26, 2008, Friday, Saturday & Sunday

**CONRAIL Historical Society Altoona 08 Convention**

Contact: 222 South Main St, Marysville, PA 17503

Submissions welcome! Contact the Editor with announcements, including dates, times, location name and address, and sponsor's name and contact information.



### ... Minutes (cont'd from Page 2)

Susan Werner will present the Division 2 bid to hold the 2013 National Convention in Pittsburgh to the NMRA BOD.

The meeting was adjourned at 2:39 PM upon a motion made by Bob Meier and seconded by Dennis Lippert.





vaccarodj@yahoo.com  
(724) 929-2190

Loren McCullough  
lorenmcc@verizon.net  
(724) 379-8596

**Webmaster & Membership**

Tom Gaus  
(412) 731-8846  
webmaster@  
keystonedivision.org

**Bring'n'Brag**  
Paul Gallick  
p.gallick@att.net

**Module Committee**  
Bob Meier  
SD45Bob@aol.com

**Editor**  
Vagel Keller  
(412) 441-7881  
vckeller@comcast.net

**FOR IMMEDIATE RELEASE:**

Greensburg, Penna., Jun 20, 2008: At 2:30p.m. on Tuesday, June 10, 2008 the track crew of the Johnstown & Lake Erie Railroad placed the final rail in place to complete one track of the main line into Johnstown, PA. At 2:50 p.m. President Richard Flock, accompanied by VP Right of Way John Oleyar and Master Electrician Ed Maier in Business car #100 traveled the last few miles into Johnstown, Pa. J&LE PR Department



# Bring 'n' Brag

## PAUL GALLICK

June's Bring 'n' Brag contest was held at the Delmont, Pennsylvania warehouse and offices of Scenic Express. The theme last month was "Built Laser Kits," and seven entries were submitted.

First place went to Steve Raque for three built HO scale B.T.S. kits. The models included 'Greeley's Place,' a MOW shed, and a LCC Loading Ramp. Steve weathered all the wood parts with alcohol washes and chalks. Additional the roof of Greeley's Place was weathered with Micro Engineering rail weathering solution.

Second place was won by Jim Whipple for his S scale 'Crated Machinery Load' built from a Building and Structure Co. kit and mounted on a flat car lettered for the B&O. Jim added prototypical bracing based on photographs of similar loads.

Third place was a three way tie between Dick Flock, Mike Hohn, and Pat Altdorfer. Dick entered three HO scale structures including a Mountain Precision Models freight house and outhouse and an American Model Builders laser cut office. Mike entered an HO scale B.T.S. PRR XA boxcar. Pat entered a Blairline HO scale Pizzaland based on the famous New Jersey original.

Other entries for last month's contest included: Robert Hickman entered a HO scale Bar Mills "Whistle Stop Junction" craftsman kit. Andy Lorince entered an S scale American Models flat car with a B.T.S. crated load.

Thanks to everyone who brought in models and voted. The next contest will be in August at the annual summer picnic in Homewood Junction Village Center Park. Next month's contest category is On-Line Structures. Standings are as follows:



<u>Name</u>	<u>Points</u>	<u>Name</u>	<u>Points</u>
Steve Raque	22	Steve Ross	6
Mike Hohn	18	Dave Wilson	5
Jim Kubanick	17	Allan Cybak	4
Dick Flock	10	Albert Zimmerman	4
Jim Whipple	9	Robert Hickman	2
Keith Devault	7	Vagel Keller	2
Pat Altdorfer	6	John Weinhold	2
Bill DeFoe	6	Hans Werner	2
Jim Dodds	6	Susan Werner	2
Andy Lorince	6	Eric Hansmann	2




of West Virginia  
128 Pleasant St.  
Downtown Morgantown, WV  
Meeting Thursdays at 7:00 pm  
Call (304) 284-9567 for more details

**GREENOCK ALLEGHENY & HELL BENT**  
Earl F. Beuteler, CEO  
1205 Greenock Rd.  
McKeesport, PA 15135  
Choocho8@aol.com

**HUNTINGDON NORTHERN RAILWAY**  
"THE ALLEGHENY ROUTE"  
R.J. Prehoda, Operations Manager  
Serving Southwestern Pennsylvania with connections to:  
B&O, CP&W, Erie Lackawanna, N&W, NYC, P&WV, PRR, WM




**SALTSBURG AND SLICKVILLE**  
*Serving PA Coal Country*  
Robert Livrone, Owner/Operator Lower Burrell, PA



**Turtle Creek Railroad**  
"The Hardshell Route"  
Serving the Center of the Universe  
Ken Hanawalt (724) 941-6107  
Carl Volkwein (724) 941-6954  
e-mail: hanawalt@isp.com

**Snappy Service**



**THE DUNADIN & DRAGON'S LAIR RAILROAD**  
Loren J. McCullough - CEO  
159 Donora Rd.  
Monongahela, PA 15603 - 3725  
loren.mccullough@comcast.net

Part of the **WEST COLUMBIA SYSTEM**



Keystone Flyer

August 2008, Volume 50, Issue 7

Page 4

## Largest Ever Div. 2 FreeMo Set-Up Has its Ups-and-Downs

Your Keystone Division FreeMo modular group was the featured model railroad at the Greenberg Train & Toy Show held in the Monroeville ExpoMart July 12 – 13. With the recent addition of four new modules the layout has now grown to occupy a 40 x 40-foot space, featuring two large steel industry facilities, a double-ended classification yard and engine terminal, several rural scenes with light industry, a reversing loop with staging tracks, and even interchange with a 3-foot narrow gauge shortline. The group welcomed new modules by Dave Neumann, Scott Schaler, Don Reed, and John Gallagher, as well as a narrow gauge extension to your editor's standard gauge corner module. The new reversing loop/staging module is the joint creation of FreeMo Committee Chair Bob Meier and Chief Electrical Engineer and Trouble-Shooting PooBah Dennis Lippert. As always, the membership display and model-building tables were prominently positioned near the entrance to the layout and manned by Membership Coordinator Tom Gaus and model builders Dick Flock and Bob Hickman.

The new set up had its strengths and weaknesses during the weekend. At its fullest extent the layout

now has the operational capability to support operation by numerous trains simultaneously even though it is a single-track mainline, which, of course, is a good thing. However, a number of glitches created by rapid expansion of the layout in recent weeks got things off to a rocky start. It was not possible to troubleshoot the whole set up until Saturday morning due to the unavailability of yours truly on Friday. Then the power supply burned out first thing due to a manufacturing defect, and it was near noon before a temporary replacement could be found. Then the inevitable glitches cropped up, but the valiant efforts of Dennis Lippert had the layout functioning by lunchtime. Some new issues cropped up on Sunday morning, as well, so Den was kept far too busy all weekend. To prepare for the next public show, October 11 – 12, the FreeMo Group will have conducted a private troubleshooting session and operating session by the time you read this.






All in all, the debut of the newly expanded FreeMo layout was a success in the judgment of those involved. Viewers constantly remark about how much more realistic it is to see trains plying between yards and industries rather than just running in circles, and the opportunities for operators to interact with viewers while they are actually performing their "chores" enhance the group's ability to engage potential new members.

Come see the layout in October

**WVC&P WEST VIRGINIA CENTRAL & PITTSBURG RAILWAY**  
E. ROY WARD






<p>719 ROLLING HILLS RD. RUFFSDALE, PA 15679 (724) 696-3028</p> 	<p>COME SEE THE LAYOUT IN OCTOBER.</p> 
<p>HO/HOn3 <b>Blacklog &amp; Shade Gap Eastern Railroad</b></p>  <p>Inquiries to: <i>Vagel Keller, Gen'l. Manager</i> P.O. Box 5130 Pittsburgh, Penna. 15206-0130 Phone: MOntrorse 1-0691</p> <p><a href="http://home.comcast.net/~vagelkeller/bsgehome.htm">http://home.comcast.net/~vagelkeller/bsgehome.htm</a></p>	<p><b>RIO GRANDE SOUTHERN</b></p>  <p>HOn3 Narrow Gauge Railroad Kevin M. Kuzman, Owner, Engineer Charleroi, PA (724) 483-3706</p>
<p><b>PENNSYLVANIA RAILROAD</b> MIDDLE DIVISION <i>"The Standard Railroad of the World!"</i></p> <p>Neal A. Schorr NMRA #69443 Owner &amp; Chief Engineer Wexford, PA</p> 	<p><b>Richard H. Flock, CEO</b> 337 Elm Drive Greensburg, PA 15601 724-850-8882</p> 
<p><b>KNOXVILLE INNERCONNECTING RAILROAD</b></p> <p>Mel Dithrich Pres. &amp; Gen. Mgr.</p>  <p>Office: 236 Alice St. Pittsburgh, PA 15210</p> <p>H.O. NMRA 8C48</p>	<p><i>Cumberland and Lake Erie Railroad</i></p>  <p><i>"The Laurel Ridge Route"</i></p> <p>D. E. Baker, V.P. of Operations 118 Laurlis Lane, Johnstown, PA 15904 dbakerr@aol.com</p>

Keystone Flyer

August 2008, Volume 50, Issue 7

Page 5

## Division 2 Picnic

by Michael Hohn

**Where:** The Division 2 picnic will take place at the park in Homewood Junction on August 17, 2008. Head for the park with the gazebo. Come into town across the bridge (as on the map). Bear left after the bridge, and come to the first stop sign. The park would be on the far side of that intersection on the left. There's parking on the streets, but the best bet is parking up the street at the fire hall.

**When:** We'll start gathering at 12:30 We will aim to have food ready at about 1:00. The business meeting will follow.

**Food:** (*This is important . . . right?*) The Division will supply hot dogs, hamburgers, and sodas. *Phone or e-mail*

*me to tell me how many will be in your party and what covered dish you will be bringing. My contact information is below. Bring 1 serving for every item you will put on your dish (usually 6) times the number in your party.*

**Seating:** There is none . . . so bring chairs for yourself and anyone in your party!

**Contact information:** Michael Hohn, 304-296-6303 (home) 304-594-2331 (work)  
e-mail: [m.e.hohn@att.net](mailto:m.e.hohn@att.net) Call with the number in your party and what you're bringing, or if you have questions.

**THE KEYSTONE DIVISION**



## WHY JOIN THE NMRA? HERE'S A REASON ...

### PATENT CHALLENGE UPDATE:

### *Real Rail Effects Fails to Respond to NMRA DCC-sound Patent Challenge*

The deadline for Real Rail Effects, Ltd. (RRE) to respond to an NMRA patent challenge has passed, with no response from RRE.

RRE was granted a patent by the United States Patent and Trademark Office (USPTO) based upon a claim that the technology for using sound with DCC was invented by RRE. The NMRA, with the technical and financial support of a number of DCC manufacturers and hobbyists around the world, filed a challenge to the RRE patent.

The NMRA filed the challenge because we believe that the claims in the RRE patent application were not supported by the facts. The NMRA was aware that prior art and other evidence existed which negated RRE's patent.

The NMRA felt that, should it remain in force, the RRE patent posed a threat to modelers and manufacturers of DCC equipment because it would both increase the costs to modelers and unfairly restrict manufacturers who provide decoders with sound. Therefore, the NMRA coordinated an industry- and hobby-wide effort to have the patent overturned. The NMRA submitted evidence from a

number of sources raising substantial questions about the validity of the patent.

On February 11, 2008, the USPTO issued a ruling granting the NMRA's patent re-examination request. The examiner stated in the ruling that there was a substantial likelihood that a reasonable examiner would consider the prior art important in determining the patentability of the application of RRE.

After the examiner at the USPTO determined that the position of the NMRA had merit and compelled a new analysis of the patent, RRE had two months to respond to the re-examination request. The deadline for a response has come and gone, and RRE made no reply. The NMRA is now very hopeful that a favorable decision will be announced and that the position of the NMRA and its supporters will be vindicated.

The NMRA considers this a clear triumph for the modeler and the model railroad industry. We are proud to have led the challenge team that has made this victory possible.

[www.NMRA.org](http://www.NMRA.org)

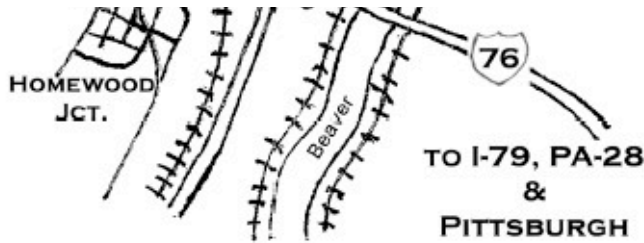


## MAP TO THE AUGUST 17, 2008 ANNUAL PICNIC

NOTE: Revised Directions Below!

The Village of Homewood Junction is located 1/2 mile from the Pennsylvania Turnpike (Interstate 76), Beaver Valley Exit 13 (formerly Exit 2). From the exit, proceed north on Route 18. Turn left at the first stop light onto Eastwood Drive, and go up the hill past the Holiday Inn entrance to the stop sign. Make a left turn onto Homewood Drive. Cross the bridge into the Village of Homewood Junction. The picnic grounds are located on the right side of the road, just past the bridge.



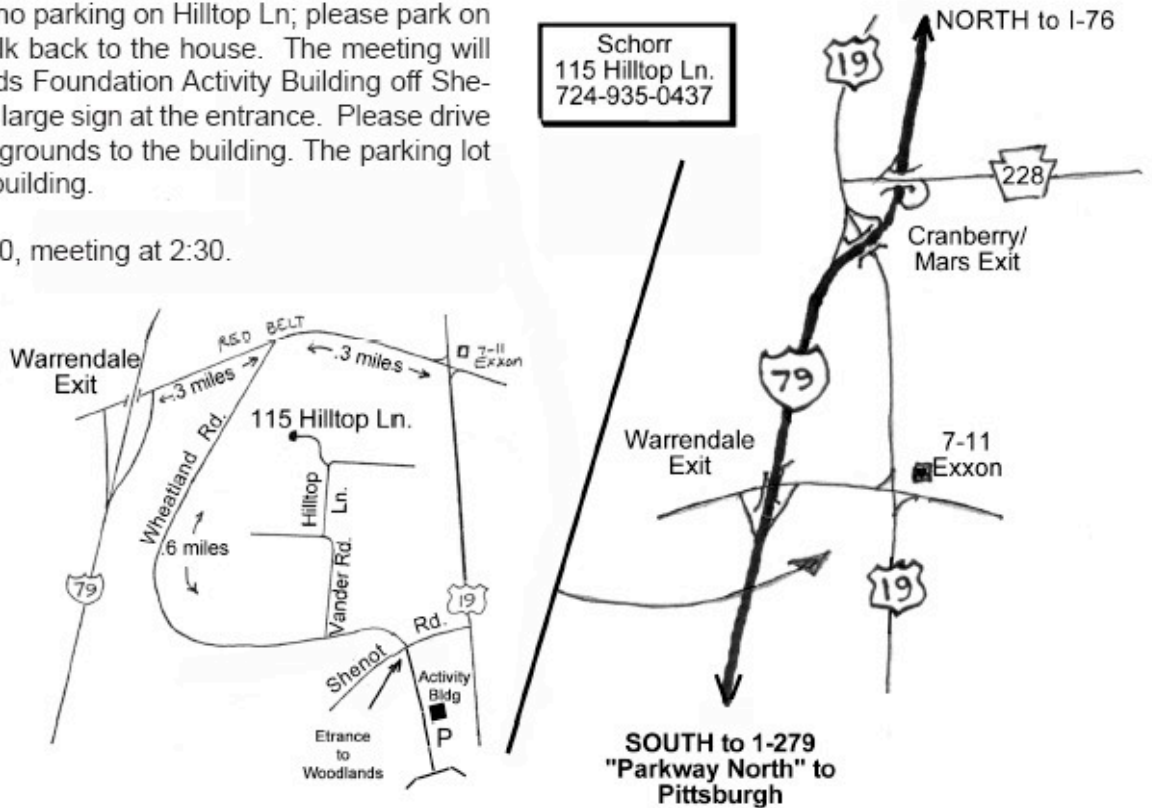


onto Norwood Drive. Cross the bridge into the village of Homewood Junction. Head for the park with the gazebo. Come into town across the bridge (as on the map). Bear left after the bridge, and come to the first stop sign. The park would be on the far side of that intersection on the left. There's parking on the streets, but the best bet is parking up the street at the fire hall.

## MAP TO THE SEPTEMBER 21, 2008 MEETING

Neal Schorr's layout is open from 12:30 - 1:30 & after the meeting. There is no parking on Hilltop Ln; please park on Vander Rd and walk back to the house. The meeting will be in the Woodlands Foundation Activity Building off Shenot Rd; look for the large sign at the entrance. Please drive slowly through the grounds to the building. The parking lot is just beyond the building.

Facility open at 1:30, meeting at 2:30.



**The Keystone Flyer**  
 Division Two, NMRA, MCR  
 266 Gateshead Drive  
 McMurray, PA 15317

Non-Profit  
 Organization  
 U. S. Postage  
 PAID  
 Pittsburgh, PA  
 PERMIT No.  
 2819



NEXT MEETING:  
 ANNUAL PICNIC  
 AUGUST 17, 2008  
 VILLAGE CENTER PARK  
 HOMEWOOD JUNCTION, PA.

<p><b>Western Pennsylvania</b> Est. 1938  <b>Model Railroad Museum</b></p> <p>(724) 444-6944 5507 Lakeside Drive, Gibsonia, Pa. 15044          Formerly the Pittsburgh Model Railroad Historical Society</p>	<p> <b>MID-MON VALLEY</b>  <b>MODEL RAILROAD</b>  <b>CLUB</b> </p> <p><b>159 Main Street, New Eagle, PA</b>  <b>Meetings: Fridays 7:30 pm</b></p>
<p> <b>McKeesport</b>™  <b>MON-YOUGH</b>  <b>VALLEY R.R.</b>  <b>MODEL R.R. CLUB</b></p> <p>Visitors Welcome  <b>MEMBERSHIP OPEN</b></p> <p>2209 Walnut Street          McKeesport, PA          Open Tuesday and Friday Evenings</p>	<p> <b>OHIO VALLEY</b>  <b>LINES</b>  <b>INC.</b></p> <p><i>Model Railroad, Museum, and Library</i></p> <p>A modeler's information resource!          OPEN Every Monday: 7:30 - 10 PM</p> <p><b>PHONE (724) 266-4787</b>          E-Mail: ohiovalleylines@yahoo.com</p>
<p> <b>DB + UP</b></p> <p><b>HO Scale</b></p> <p>Robert F. Hickman          Pittsburgh, PA          EMAIL: wvhuho@aol.com</p> <p><b>PENN WEST</b>  <b>STREETCAR LINE</b>  <b>Under Construction</b></p> <p>Owner          &amp;          Chief Engineer</p>	<p> <b>BEAVER COUNTY</b>  <b>MODEL RAILROAD and HISTORICAL SOCIETY</b> </p> <p>416 6th St.          Monaca, PA 15061  Visitors Welcome</p> <p>New HO layout under construction - Worknights: Tuesdays 7:30  <a href="http://ebni.com/bcmrr/">http://ebni.com/bcmrr/</a></p>

Copyright(c) 2008 [Division Two, NMRA-MCR](#). All Rights Reserved.  
 E-mail the [WebMaster](#) with comments or corrections.