

---

# The Kingpin



A publication of the Mid-Central Region of The National Model Railroad Association, Inc.

---

## Fall 2011

### ***From the President's desk...***

The leaves are turning and causing us to get out the rakes and yard waste bags again. It is also time get serious about those modeling projects that were set aside for lawn mowing, vacations and other activities suitable for the more temperate weather of summer.

The Mid-Central Region held the Fall Board of Directors Meeting recently and I can report to you that all of the Divisions in our Region are active and financially sound. All Divisions reported on current and upcoming activities in their respective areas.

Division 2 gave a status report on the 2012 *Convention* in Pittsburgh. I encourage all to consider attending as the programs planned sound exciting and the list of tours worth the trip. The winter *Kingpin* will have the complete program for the 2012 event.

Division 3 also gave an update on plans for the 2013 *Convention* in Dayton, Ohio. They are also planning to have lots of new and different program opportunities for attendees.

At the Spring Board Meeting in Pittsburgh we will be naming the Regional Nominating Committee for the 2013 Regional Officer Elections. Please give consideration to running for one of the Regional Offices. All of the current officers are term limited, therefore all offices will be placed on the ballot. It is time for new blood and fresh ideas! Step up and run for office.

We are saddened to report the loss of another great modeler and fine gentleman. Ted

Wetterstroem passed away recently. Ted was the long time Super of Division 0 and represented those members who did not belong to a specific Division geographically. He developed the design art work for numerous Convention cars. Ted also designed the MCR and Division 6 logos. I can picture Ted and Dean rekindling some of their past discussions, and there were many.

For those of you that are computer savvy, (not me) check out the [NMRA-infonet@earthlink.net](mailto:NMRA-infonet@earthlink.net) on the internet for the latest news from the Chattanooga HQ. Speaking of news, like everything there will be a dues increase as of January 1 to \$44. Five dollars seems like a lot, but considering the vast improvements to the magazine we receive and the other improved benefits we receive it is a modest increase. Compared to the increased cost of model freight cars, 5 bucks is not a lot. Have you checked out the on-line archives from National. Almost as good as a trip to the library.

Early next year I will be seeking nominations for the "Director's" and "Wenderfer" awards. These awards are presented annually at the Convention Banquet for those members who have given outstanding service to the Region, their Division and the hobby. Please encourage your Super to nominate someone for these awards. I'm sure that there is a worthy candidate in each Division. You can review the criteria and listing of past recipients on the MCR web site.

Happy Modeling!

Dick Briggs, MMR,  
Mid-Central Region President



***MCR Financial Report***

<b>Mid-Central Region, NMRA Inc.</b>	
<b>Financial Report for the Period</b>	
<b>April 7, 2011 – September 30, 2011</b>	
Check with on of the	
MCR Officers	
for financial information	
Submitted by Paul E. Smith, Treasurer	
Mid-Central Region, NMRA, Inc.	



***National Model Railroad Association***  
***Mid-Central Region***  
***Board of Directors Meeting***  
***Columbus, Ohio***  
***October 2, 2011***

The Mid-Central Region's Board of Directors Meeting was held at Schmidt's Restaurant in Columbus, Ohio. The meeting was called to order at 12:51 PM. All attendees introduced themselves then the roll was taken. All MCR Officers were present and all divisions except divisions 4, 10, and 11 were represented by their Superintendents. Committee managers present were Contest and Webmaster.

A motion was made, seconded, and approved to accept the minutes of the April 29, 2011 BOD meeting as corrected and distributed to board members prior to the meeting.

A motion was made, seconded, and approved to accept the Treasurer's report as submitted

to board members prior to the meeting. Treasurer Paul Smith noted that our assets have increased by about \$2400 since he became treasurer in mid-2009.

**Vice President's Report**

MCR Vice President, Merlyn Jarman, made the following comments:

- The *Clinician Database* has been updated as of September 6, 2011.
- The *Contact Database* for Division and Region Officers and other key positions has been updated as of September 30, 2011.

-----  
**Summer BOD Meeting**

Continued on page 3.

**MCR Contacts**

MCR President:

Dick Briggs, MMR

[president@midcentral-region-nmra.org](mailto:president@midcentral-region-nmra.org)

614-277-0314

MCR Vice President:

Merlyn Jarman

[vp@midcentral-region-nmra.org](mailto:vp@midcentral-region-nmra.org)

812-539-3232

MCR Secretary:

Robert Weinheimer, MMR

[secretary@midcentral-region-nmra.org](mailto:secretary@midcentral-region-nmra.org)

304-343-1428

MCR Treasurer:

Paul Smith

[treasurer@midcentral-region-nmra.org](mailto:treasurer@midcentral-region-nmra.org)

216-650-2192

Achievement Program

Frank Koch

[achievement@midcentral-region-nmra.org](mailto:achievement@midcentral-region-nmra.org)

513-732-6208

Contest

Howard Smith, MMR

[contest@midcentral-region-nmra.org](mailto:contest@midcentral-region-nmra.org)

614-871-0500

2012 Convention

Tom Gaus, Registrar

[2012convention@midcentral-region-nmra.org](mailto:2012convention@midcentral-region-nmra.org)

2013 Convention

[2013convention@midcentral-region-nmra.org](mailto:2013convention@midcentral-region-nmra.org)

Education

Tom Miller

[education@midcentral-region-nmra.org](mailto:education@midcentral-region-nmra.org)

859-224-8563

Membership

Paul Novak

[membership@midcentral-region-nmra.org](mailto:membership@midcentral-region-nmra.org)

440-235-2620

Special Projects

Tom Beutler

[projects@midcentral-region-nmra.org](mailto:projects@midcentral-region-nmra.org)

419-231-1038

Webmaster

Donald Wilke

[webmaster@midcentral-region-nmra.org](mailto:webmaster@midcentral-region-nmra.org)

614-846-2558

See: [www.midcentral-region-nmra.org/committees2.html](http://www.midcentral-region-nmra.org/committees2.html)

## MCR Superintendents

Division 1: Randall Dettmer

[Division1super@midcentral-region-nmra.org](mailto:Division1super@midcentral-region-nmra.org)  
330-592-1800

Division 2: Susan Werner

[Division2super@midcentral-region-nmra.org](mailto:Division2super@midcentral-region-nmra.org)  
724-379-8584

Division 3: Wil Davis

[Division3super@midcentral-region-nmra.org](mailto:Division3super@midcentral-region-nmra.org)

Division 4: Art Bumpas

[Division4super@midcentral-region-nmra.org](mailto:Division4super@midcentral-region-nmra.org)  
440-845-4915

Division 5: Mike Buehner

[Division5super@midcentral-region-nmra.org](mailto:Division5super@midcentral-region-nmra.org)  
440-428-0137

Division 6: Robert E. Lee

[Division6super@midcentral-region-nmra.org](mailto:Division6super@midcentral-region-nmra.org)  
614-868-1664

Division 7: Randy Kerka

[Division7super@midcentral-region-nmra.org](mailto:Division7super@midcentral-region-nmra.org)  
513-777-0536

Division 8: Mark Norman

[Division8super@midcentral-region-nmra.org](mailto:Division8super@midcentral-region-nmra.org)  
502-254-9249

Division 9: Bob Weinheimer, MMR

[Division9super@midcentral-region-nmra.org](mailto:Division9super@midcentral-region-nmra.org)  
304-343-1428

Division 10: Pete Birdsong

[Division10super@midcentral-region-nmra.org](mailto:Division10super@midcentral-region-nmra.org)  
859-273-5821

Division 11: Paul Kurutz

[Division11super@midcentral-region-nmra.org](mailto:Division11super@midcentral-region-nmra.org)

Continued: **Summer BOD Meeting**

- Both databases are posted on secure pages on the MCR Officers Archive Web Site.

### Committee Reports

**Membership:** The Membership Manager was absent but reported that membership is nearly constant with a slight downward trend.

**Contest:** Howard Smith reported that we had a great contest at the *Rails of Ages Convention*. He thanked the judges but noted that he always needs more judges and asked that names of candidates be sent to him.

**Achievement Program:** The AP Manager was absent but sent a report that noted that MCR members had earned 4 Golden Spikes, 22 Merit Awards, and 13 AP Certificates. There are 2 members with 6 certificates and 8 members with 5 certificates.

**Kingpin:** Region expenses have been reduced due to cost savings associated with the *Kingpin*. Only 243 members have chosen to receive an email notification that the *Kingpin* has been posted on the MCR Web Site. Some others receive a mailed copy. The next deadline is October 23, the deadline for the winter edition will be in early December. We are always looking for high quality photos.

**Webmaster:** Don Wilke reported that the MCR Web Site is undergoing a redesign and style makeover. Access to the Officers' Archive will be by login and use a password designated by the particular user. Don also needs contact information for those involved with Boy Scout programs. He also needs information about events

**Summer BOD Meeting**

Continued on page 4.

## *The Kingpin*

The opinions, techniques and materials recommended in *The Kingpin* are solely those of the authors as individuals. They do not reflect the approval, opinions or policies of the Mid-Central Region, NMRA, Inc. Many materials used in many model railroading projects need adequate ventilation and other safeguards. Be aware of these risks before attempting to duplicate the techniques described in these articles. The use of any or all materials and techniques is solely at the risk of the user and the Mid-Central Region has no liability for the use or misuse of any and all materials and techniques described in these articles.

Comments, concerns, compliments, and suggestions should be directed to either:

[Kingpin Editor](#): Dick Briggs, MMR

or

[Kingpin Publisher](#): Don Wilke

Continued: **Summer BOD Meeting**

around the Region. Finally, he noted that he is working on making sure the MCR Web Site properly addresses privacy issues.

**Division Reports**

Note that all Superintendents' written reports are on the MCR Officers' Archive Web Site, these comments are summaries of oral reports made at the meeting.

**Division 1:** Randy Dettmer reported that membership is around 100 and finances are in good shape. They need help with IRS filings. The newsletter will now have 4 hobby shop advertisers, up from 2. They are looking at bringing their web site production in house. Finally, the first of their modules is about to appear.

**Division 2:** Susan Werner reported that Division 2 is in good financial shape, a good source of income is their company store. Membership has declined a bit due to deaths and members moving away. They typically sign up 6 to 8 members at train shows but these folks seldom reside in Division 2. Meeting attendance is about 50 and AP interest is rising. They are also working hard on the *HIGH-LINE to Pittsburgh Convention*.

**Division 3:** Wil Davis reported that Division 3 is "chugging along" with 45 to 50 members at each meeting. They are working on member retention. They have also started a Division Facebook page that is doing quite well. They also



*MCR Vice-President Merlyn Jarman, President Dick Briggs, and Secretary Bob Weinheimer.*

report that they have taken ownership of an old layout.

**Division 4:** Absent, see written report.

**Division 5:** Mike Buehner reported that Division 5 has 86 members with 30 to 35 attending meetings. They recently had their 50th anniversary dinner, many past Superintendents including their first were in attendance.

**Division 6:** Bob Lee reported that finances are good but that membership is declining due to deaths. Division 6 is investigating their life members who are not active to see who is alive and to correct any contact information. Long time Division 6 member Ted Wetterstroem passed away recently.

**Division 7:** Randy Kerka reported that membership is around 290 with 65 or so attending summer meetings. This typically includes 5 new members or guests. Last year's budget showed a deficit but that is now under control. Their newsletter is a drain on finances. Car projects are improving. An upcoming bus

trip to an undisclosed location is being planned.

**Division 8:** Mark Norman said Division 8 is seeking a new home for their meetings. He also told us that they are working on a popular vote contest that would encourage voting by using raffle tickets. The idea is that one or more voters might win prizes. Their annual train show, this year on November 19, is moving to a larger hall that is at the site of the 2007 MCR convention.

**Division 9:** Bob Weinheimer reported that the Division is in good financial shape and that membership is around 60 with 20 to 25 regular meeting attendees. Meetings are held in even number months at West Virginia Hobbies and Crafts in Teays Valley, WV with meetings in odd number months in outlying locations including Portsmouth and Gallipolis, OH and Parkersburg, Bluefield, and Ronceverte, WV. Some members travel 4 hours to the outlying meetings and many drive up to 2 hours to the hobby shop site.

**Summer BOD Meeting**

Continued on page 5.

**Continued: Summer BOD Meeting**

The newsletter is doing well, they typically mail only about a dozen copies, the remainder, about 80%, go to members via email.

**Division 10:** Absent, see written report.

**Division 11:** Absent, see written report.

**Old Business**

**2011 MCR Convention:** Mike Buehner reported that a complete convention report has been submitted for the *Rails of Ages Convention*. There were 147 primary registrants, 62 family members, and 3 new NMRA members. Thirty eight evaluation forms were returned with ratings of 4.0 to 4.6 out of 5 for most categories. Good things noted were the people, the chance to catch up with old friends and to make new friends, and the cookie auction. Disappointments included contest judging, the price of food and the service at the hotel restaurant, the weather, the lack of merchandise at the company store, and the silent auction hours. The timetable was good but the operating sessions needed better information. The convention netted \$655.50 after refunding registration fees to volunteers and rebating clinician registration fees by \$20.

**2012 MCR Convention:** Susan Werner reported that the *HIGH-LINE to Pittsburgh Convention* will take place April 26 to 29, 2012. The convention hotel is currently a Radisson but will be rebranded to a Doubletree by the time of the convention. All commit-

ments, including the \$90 room rate, are being honored by the new management. Early bird registration forms as well as order forms for the convention kit are on the Web Site. Four tours are already arranged and about 20 clinics have been arranged. There will be a full non-rail program including river tours of Pittsburgh. There are many fast food restaurants close to the hotel. Of course, the *Wheeling and Lake Erie Rook Yard* is across the street from the hotel. The silent auction is being replaced by a White Elephant Sale. There will be operating sessions Thursday evening. Through the end of September there have been 19 primary registrations.

**2013 MCR Convention:** Wil Davis reported that the convention will have an operations emphasis. The hotel was apparently anxious for business as there are no meeting room costs and no minimum sleeping room guarantee.

**Scott County Transfer:** MCR President, Dick Briggs, reported that the MCR has approved the transfer of Scott County, Indiana to the Mid West Region. This allows National to take action.

**New Business**

**Erie County, PA:** Erie and Warrant Counties in Pennsylvania are presently part of the Niagara Frontier Region. The NFR includes divisions in the United States and Canada. Some members are unhappy with the need for passports when crossing the border to attend NFR functions in Canada. Apparently an earlier division had been

deactivated as some of its officers were not NMRA members. They are interested in joining MCR Division 5. Dick Briggs feels they need to work on getting an active division together. Failing that, they need to follow the National regulations for transferring to the Mid-Central Region. The Region would then assign these counties to an MCR Division.

**Model Railroading for Beginners:** Tom Miller's Education report addresses this issue. Dick Briggs suggested the MCR consider a beginners class in central Ohio for 2014 as we won't be having a Regional Convention due to the NMRA National Convention in Cleveland.

**Legal Advisor:** Our legal advisor has stepped aside due to his retirement. Is there an attorney in the MCR would take on this assignment? He or she would get Association Volunteer points.

**Regional Elections:** They are coming sooner than we think. Lin Young is the Nominations Manager and needs two more committee members. The committee needs to make their report by the Pittsburgh Convention.

**Good of the Order**

Susan Werner has early bird convention registration forms as well as pump house kit (convention building) order forms.

The meeting adjourned at 2:16 PM.

Respectfully Submitted,  
Robert M. Weinheimer, MMR  
Mid-Central Region Secretary



## Ted Wetterstroem

Theodore “Ted” David Wetterstroem, Jr., age 84, died on Wednesday, September 21, 2011.

Ted was the owner of D & T Enterprises, named for his wife, Dottie, and himself. They sold model railroad supplies for over 25 years.

He was a Life member of *The National Model Railroad Association, Inc., Division 6 of the Mid-Central Region*, *Columbus Model Railroad Club* and Superintendent of *Division 0*. As *Division 0 Super*, Ted kept former MCR members informed about division & region activities. He was a longtime member of *The Chesapeake & Ohio Historical Society* and *The Western Maryland Railway Historical Society*.

Ted created the art work and helped produce over 28 different model railroad freight car projects as well as designing the logos for *Division 6* and *Mid-Central Region of NMRA*.

In 1974, Ted co-authored *Chesapeake & Ohio Freight Cars Prior to 1945* with long time friend, Dean Freytag, for *The Chesapeake & Ohio Historical Society*.

He wrote many short articles for model railroad magazines, including *Model Railroader Magazine*, and various NMRA publications, national and local.

Ted was an excellent modeler and he won a number of Divisional and Regional Contests. His affection for the Thumz cartoon in the old *NMRA Bulletin* caused him to enter as many biffys in contests as he thought he could get away with. He even entered a two story biffy in one contest.



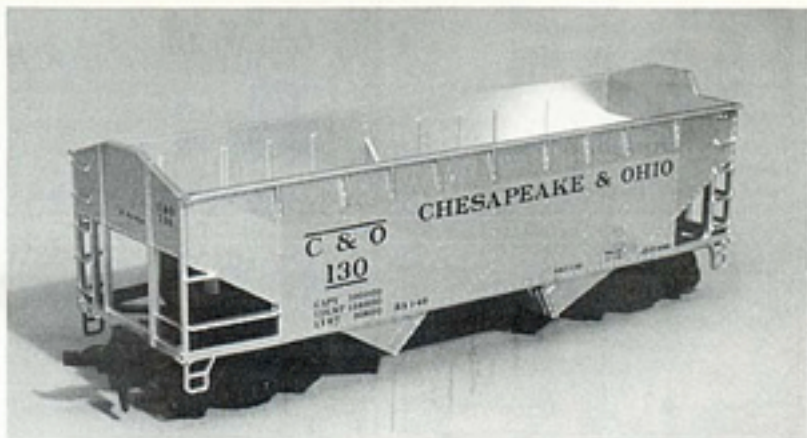
**Ted Wetterstroem**  
Painting by  
Dave Wetterstroem



**“Last of the Biffy’s” March 2010 by Ted Wetterstroem**

### New Products

*The Chesapeake & Ohio rebuilt five of their hoppers in January of 1948 with aluminum bodies (according to the C&OHS magazine). The Mid-Central Region of the NMRA, c/o Ted Wetterstroem, 197 E. Tulane Rd., Dept. MRG, Columbus, OH 43202-2221, is offering Athearn models in those markings at \$7.50 postpaid.*



**Ad from May 1988 - note the price of \$7.50.**



# Take the **HIGH-LINE** to Pittsburgh for the **2012 Mid-Central Region Convention!**

**April 26-29, 2012**

**EVERYTHING YOU WANT IN A GREAT CONVENTION AND MORE!**

**Clinics - Tours - Contests - Non-Rail Activities - Layout Tours  
Banquet - Raffle - Door Prizes Galore - Railfanning - Great Location**

Our convention hotel, the Pittsburgh Radisson, is just minutes from downtown Pittsburgh, so you'll have the opportunity to see the city, visit Station Square Shops, ride our two historic inclines, railfan and enjoy the sights. Not only that, but right across the road from the hotel is Rook Yard, the former home of the Pittsburgh & West Virginia Railroad, now a part of the W&LE Railroad. You can practically railfan from your hotel room!

**Just some of the potential activities you'll find at the HIGH-LINE to Pittsburgh Convention!**

**A Variety of Rail Tours**

Steel Industry History  
Hussey Copper  
The Bridges of Pittsburgh  
Port Authority Light Rail Shops

**Great Clinics**

Hands-on clinics  
Western Pennsylvania Railroads  
Steel and Other Prototype Industries  
Operations: Real and Simulated  
Modern Railroad Equipment and Practices  
Narrow Gauge Railroads, Model and Prototype  
Modeling Structures, Rolling Stock & Scenery

**Non-Rail Tours**

Pittsburgh Glass Factory Make & Take  
Just Ducky Tour of Pittsburgh  
In-House Clinics for Non-Rails.

**Local Attractions**

Carnegie Science Center  
Station Square Shops

**Railfanning**

NS & CSX Mainline Action  
W&LE Across From the Hotel  
Variety of Local Shortlines



**For more information as it becomes available, see our convention home page:  
[www.highlinetopittsburgh.org](http://www.highlinetopittsburgh.org)**



# HIGH-LINE to Pittsburgh

Early Registration Form  
April 26 - 29, 2012



NMRA, Mid-Central Region, Division 2  
The Keystone Division

Primary registrant MUST be an NMRA member at the time of the Convention

Primary Registrant Badge Name \_\_\_\_\_

NMRA No. \_\_\_\_\_ Region \_\_\_\_\_ Division \_\_\_\_\_

Street Address \_\_\_\_\_

City \_\_\_\_\_ State \_\_\_\_\_ Zip \_\_\_\_\_

Phone \_\_\_\_\_ E-mail \_\_\_\_\_

Number of persons attending \_\_\_\_\_ Names of Others \_\_\_\_\_

Item	Quantity	Price	Amount
Early Basic Registration (through Jan. 31, 2012)		\$45.00	
Regular Registration (after Jan. 31, 2012)		\$60.00	
One Year NMRA Membership (use current dues amount)		\$_____	
Family Members (same household)		\$15.00	
		Total	

Sign-up form for extra fare items will be sent out to all early registrants at a later date.

Activity assignment will be based on the order that the applications are received.

Make check payable to: **NMRA, Keystone Div 2, Mid-Central Region**

Mail to: **Convention Registrar, Tom Gaus**

**3357 New Texas Road**

**Pittsburgh, PA 15239**

**412-731-8846**

**e-mail: tom@tomgaus.com**

Room reservations should be made directly with the convention hotel

**Pittsburgh Doubletree Hotel & Convention Center**

**101 Radisson Drive, Pittsburgh, PA 15205 1-866-486-4361**

Mention National Model Railroad Assn. when making reservations **Rate \$90.00/night + tax**

**www.highlinetopittsburgh.org**





Supporting the NMRA Mid Central Region Convention in 2012 Pittsburgh, PA



# Pump House Building

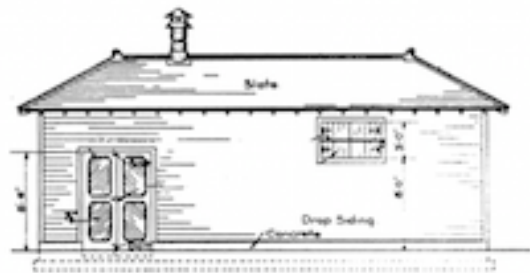
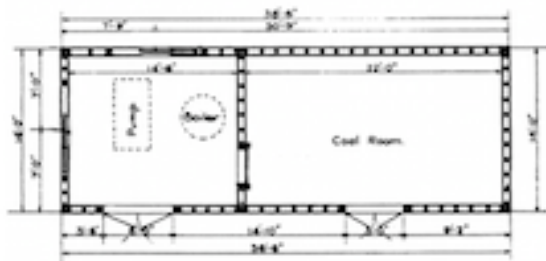


Available in O, S, HO, & N

Based on a B&O prototype, pump houses were a fixture in rail yards, industrial sites, and as town water supplies from the mid 1800's through today. Changing roof ridge detail and smoke stack style would allow the model to be used for many other railroads and scenery locations. Once the need for steam pumping was no longer required, many of these buildings were converted to electric drive pumps, or other uses including storage or offices.

This is a high quality laser cut building manufactured by Monroe Models exclusively for us featuring walls, roof, ridge, and stack details. Assembly instructions and drawing are included.

Prices for the model are: O \$23.00 S \$20.00 HO \$18.00 N \$14.00 each. If not picking up the model at the 2012 convention, please add \$4.00 each for shipping and handling. Expected initial order delivery is late Fall 2011.



B & O Pump House as built by Monroe Models



Scale	Price Each	Quantity	Totals
O	\$23.00	_____	\$ _____
S	\$20.00	_____	\$ _____
HO	\$18.00	_____	\$ _____
N	\$14.00	_____	\$ _____
S&H	\$4.00	_____	\$ _____
Order Total			\$ _____

Please send check or money order made to:

NMRA, Keystone Div. 2, MCR  
 C/O Dennis Vaccaro  
 830 Daugherty Ln.  
 Rostraver, PA 15012

Name: \_\_\_\_\_

Address: \_\_\_\_\_

City: \_\_\_\_\_

State, Zip Code: \_\_\_\_\_

If you not picking up the model at the 2012 convention, please add \$4.00 **each** kit for shipping and handling. Expected initial order delivery is late Fall 2011.

Pick up at HIGH-LINE to Pittsburgh [NO S&H]

***On the Rails in Siberia: 2-10-0 Steam Locomotive***

How many guys get to see a Soviet 2-10-0? My 50th High School reunion is coming up and there is a contest for the most unusual finding each graduate has experienced in the past 50 years. I am submitting this picture. In Siberia I came upon the classic 2-10-0 steam locomotive FD 21, *Novosibirsk* which was a Soviet workhorse during World War II. There is also a Russian commemorative stamp issued on

this 2-10-0 that really shows the features of this steam locomotive and shows how the Russian people have acknowledged its contribution to classic railroad history.

The *FD 21, Novosibirsk* a workhorse of the Soviet's during WW II was a sight to see. This powerful 2-10-0 locomotive was a solid workhouse freight locomotive used for military movements. Created from US imports built by ALCO and Baldwin and German engineering, Germany, France, Belgium and Austria had similar prototypes. The first were built by the individual German state railways from 1915 to

1918, and were *Prussian, G-12*. These later became the *German Imperial Railway Company* or *Deutsche Reichsbahn-Gesellschaft* (DRG) BR58.

The DRG then produced a number of standard classes of 2-10-0s: the heavy 3-cylinder BR44 (1753 built), the two-cylinder version BR43 (35 built), and the lightweight BR50 (3164 built). During wartime, the BR44 and BR50 designs were simplified as *ÜK (Übergangs Kriegslocomotiven*, or Interim War Locomotives). Examining the powerhouse Steam locomotive *FD 21, Novosibirsk* number 3000 in Siberia Russia was a dream fulfilled for a classic trains enthusiast from NMRA MCR. Tom Miller



***Stamp: Steam Locomotive Class FD 21, Novosibirsk***



***Soviet class FD 21, Novosibirsk, number 3000 in Siberia Russia***



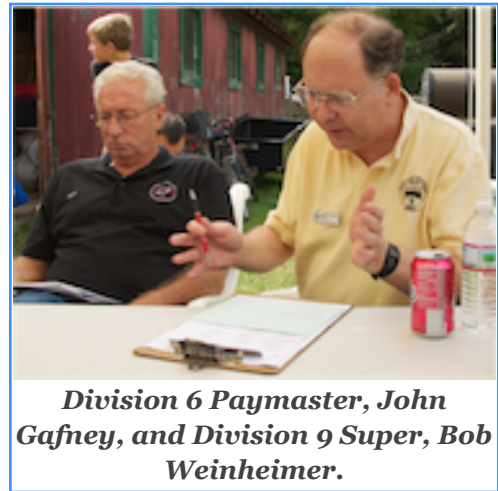
***Has Your Division Tried It?  
A Joint Divisional Meeting***

Division 6 and Division 9 recently held a joint divisional meeting and cookout at Mark Maynard's in Portsmouth, Ohio. Mark's layout, in Division 9, is just a little south of Division 6 and is a convenient location for both divisions. A few Division 9 members drove 4 hours up and 4 hour back in the same day.

After viewing Mark's layout, sharing stories and tall tails, scanning a flea market, and consuming too much good

food, a joint business meeting was held. Bob Weinheimer, Superintendent of Division 9, started off the meeting as host, made a few remarks, and handed off the meeting to Bob Lee, Superintendent of Division 6. The remainder of the meeting proceeded the same way with Bob and Bob (insert your own joke here) alternating with agenda items.

DWW



***Division 6 Paymaster, John Gafney, and Division 9 Super, Bob Weinheimer.***

***Mid-Central Region's  
Newest Master Model Railroader***

The joint Division 6 & Division 9 meeting at Mark Maynard's house in Portsmouth, Ohio was the scene of the induction of the Mid-Central Region's newest Master Model Railroader. Mid-Central President, Dick Briggs, MMR, presented Gary Burdette with his newly earned Master Model Railroader Award. Gary was surrounded by four MMR's from both divisions during the presentation.



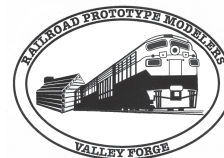
***Howard Smith, MMR; Bob Weinheimer, MMR; Dick Briggs, MMR; Gary Burdette, MMR; and Ed Keith, MMR.***

DWW

**Railroad Prototype Modelers  
Valley Forge**

**March 23-25, 2012**

Desmond Great Valley Hotel & Conference Center  
Malvern, PA



**Clinics ■ Model Displays ■ Vendors' Room  
Operating Sessions ■ Sunday Home Layout Tour**

For information, updates, or to register, go to:

**[www.phillynmra.org](http://www.phillynmra.org)**

MCR President Dick Briggs  
 4397 Hidden Street  
 Grove City, Ohio 43123



### Mid-Central Region Calendar

**27–30 October 2011**

*Piedmont Crossing*, 2011 MER Convention – Cary, NC

**29–30 October 2011**

Cincinnati Train Show, Cincinnati, Ohio

**November**

NMRA Month

**5–6 November 2011**

Dayton Train Show, Dayton, Ohio

**4 December 2011**

Springfield Train Show, Springfield, Ohio

**26 – 29 April 2012**

*HIGH-LINE to Pittsburgh*, 2012 MCR Convention – Pittsburgh, Pennsylvania

Open House? Train Show? Contact The [MCR WEB Master](#) to add an event to *The Kingpin* and the MCR WEB Site calendar.

*Rails of Ages* Contest Winners are still available at:

[http://archive.midcentral-region-nmra.org/conventionFold/2011\\_Contest/11ModelIndex.html](http://archive.midcentral-region-nmra.org/conventionFold/2011_Contest/11ModelIndex.html)

**Best of Show:**  
*Model*



**Best of Show:**  
*Photograph*

